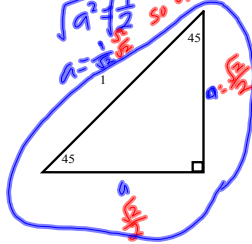


Pythagorean Theorem

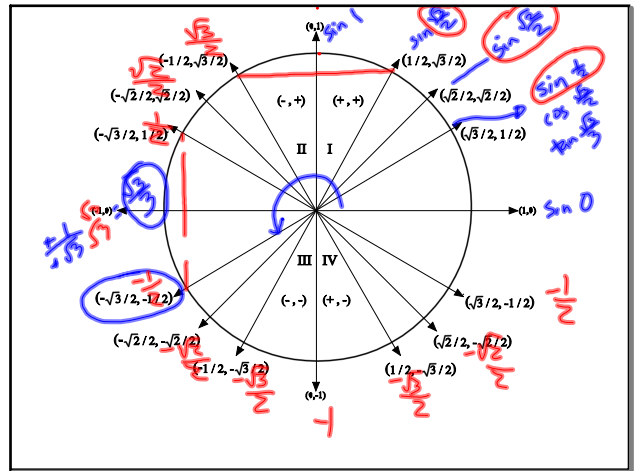
$$a^2 + a^2 = 1^2$$

$$\frac{2a^2}{2} = \frac{1}{2}$$

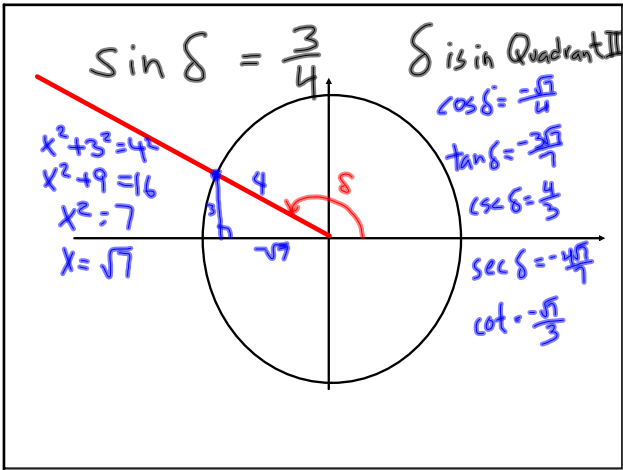
$$a^2 = \frac{1}{2} \text{ so } a = \frac{\sqrt{2}}{2}$$



Jan 9-11:25 AM



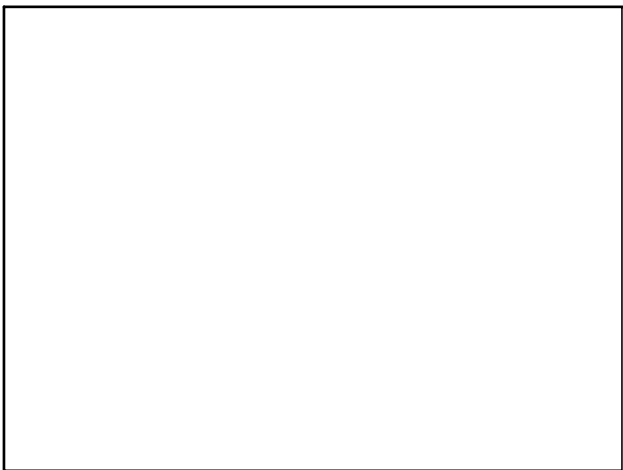
Unit circle - coordinates



Jan 9-12:42 PM

$$\frac{1/\sqrt{2}}{\sqrt{3}/2} = \frac{1}{\sqrt{2}} \cdot \frac{2}{\sqrt{3}} = \frac{1}{\sqrt{3}} \cdot \frac{\sqrt{2}}{\sqrt{2}} = \frac{\sqrt{2}}{\sqrt{3}}$$

Jan 9-12:58 PM



Jan 9-12:59 PM